

Capital Asset Advisory Committee 2018 Capital Improvement Program Financial Status as of August 15, 2021

August 19, 2021

2018 CAPITAL IMPROVEMENT PROGRAM – FINANCIAL STATUS 8/15/2021

Forecasted Revenue

First Issuance

\$	326,490,000	Bond Issuance
\$	50,165,349	Premium on First Bond Issuance
\$	(1,655,349)	Issuance Costs
\$	11,775,932	Interest Through June 2021, net of bank fees
\$	386,775,932	

Second Issuance

\$	240,510,000	Bond Issuance
\$	68,309,148	Premium on First Bond Issuance
\$	(1,293,367)	Issuance Costs
\$	88,557	Interest Through June 2021, net of bank fees
\$	307,614,338	

Capital Transfer

\$	72,253,663	FY 2019, 2020, 2021 & 2022 Transfers from General Fund less COP Principal & Interest
\$	62,701,443	Forecasted FY 2023, 2024, 2025 Transfers from General Fund Less COP Principal & Interest
\$	134,955,106	

TBD Future Interest Earnings

\$ 829,345,376 Preliminary Revenue

2018 CAPITAL IMPROVEMENT PROGRAM – FINANCIAL STATUS 8/15/2021

Expenditures

As of August 15, 2021

As of July 15, 2021

\$ 345,134,131	All expenditures to date, first issuance		
\$ 34,154,091	All expenditures to date - second issuance		
\$ 379,288,222	Total Expenditures	\$351,782,307	Total Expended - All projects
\$ 34,649,483	All encumbrances, first issuance		
\$ 50,827,317	All encumbrances, second issuance		
\$ 85,476,800	Total Encumbrances	\$107,781,291	Total Encumbered - All projects

First issuance: 87% of bond proceeds spent (net of retainage)

Second issuance: 16% of bond proceeds spent (net of retainage)

Charter

\$ 48,633,629	Total Expended - Charter	\$46,940,654	Total Expended - Charter
\$ 1,624,948	Total Encumbered - Charter	\$2,051,800	Total Encumbered - Charter

2018 CAPITAL IMPROVEMENT PROGRAM – FINANCIAL STATUS 8/15/2021

Work in Progress & Completion Dates

		Events	
Alameda Addition / Renovation	8/22		Artificial Turf & Tracks @ 4 HS 9/21
Pomona HS Addition/Renovation	8/22		29 Efficiency & Future Ready 8/21
Marshdale ES Replacement	8/22		LED Replacement Phase II 11 Sites 9/21
D'Evelyn ES Addition / Renovation	8/22		7 Playgrounds, 5 Paving Projects 8/21
Columbine HS Aux Gym, Exterior Entry	8/21	8/20	3 Roofing Projects 8/21
Conifer HS Aux Gym	5/21	8/16	
Green Mountain HS Aux Gym	7/21		
Jefferson Jr./Sr. HS Addition / Renovation	8/21	TBD	
Kendrick Lakes ES Replacement	8/21		
Bell MS Addition	8/21	9/1	
Manning School Addition	8/21	TBD	
Parmalee ES Addition / Renovation	8/21	TBD	
Foster ES Addition / Renovation	8/21	TBD	
Warren Tech South	8/21	9/24	
Wayne Carle MS Addition	8/21	8/25	
Lumberg ES Addition / Renovation	8/21	TBD	

2018 CAPITAL IMPROVEMENT PROGRAM – FINANCIAL STATUS 8/15/2021

In Design

Powderhorn Addition/Renovation	Bid 6/15	\$ 4,690,000	
Prospect Valley ES Replacement	Bid 6/25	\$17,664,000	
Standley Lake HS Addition/Renovation	Bid 7/15	\$ 6,427,300	
Evergreen MS Renovation	Bid 7/29	\$ 5,347,900	
Evergreen HS Renovation	GMP 8/15	\$ 8,215,738	
Jeffco Open School Addition/Renovation	Bid 8/26		
Ralston Valley HS Addition/Renovation	Bid 9/9		
Furniture, Fixtures & Equipment (FF&E) Sites Include: Conifer HS Library, Green Mtn. ES, Sheridan Green ES, Kyffin ES, Lasley ES, Lumberg ES, Dennison ES, Manning School, WTOC-South, Everitte MS, Jefferson HS, Pomona HS, Alameda Intl. Jr./Sr. HS, Fremont ES			Various



CAAC Design and Construction Update

8-18-2021



COLORADO ASPHALT SHORTAGE 2021

CDOT Pushes Back I-70 Westbound Closure Through Central 70 Project Due To Oil Shortage

By Justin Adams July 18, 2021 at 11:59 pm Filed Under: Central 70 Project, Colorado Department of Transportation, Colorado News, Denver News, I-70, I-70 Closure, I-70 Traffic

LOCAL NEWS

Asphalt shortage impacts road construction as oil production slows



TRAFFIC

Summer construction could extend to fall due to asphalt shortages

It could be August or September before some projects are able to resume, according to the county public works department.

He said the department has faced asphalt shortages before, but this is the largest that's occurred in the middle of the construction season in recent years.

COLORADO ASPHALT SHORTAGE 2021



COLORADO ASPHALT SHORTAGE 2021



COLORADO ASPHALT SHORTAGE 2021

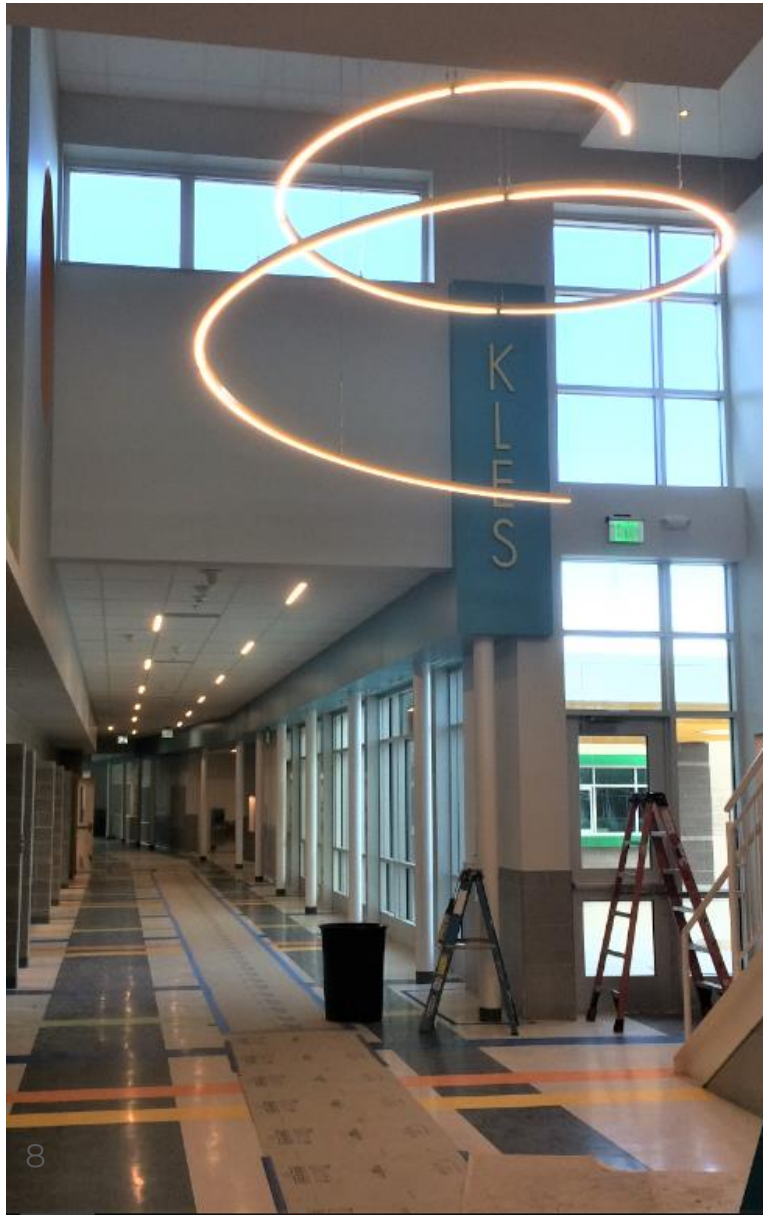


2021 Projects

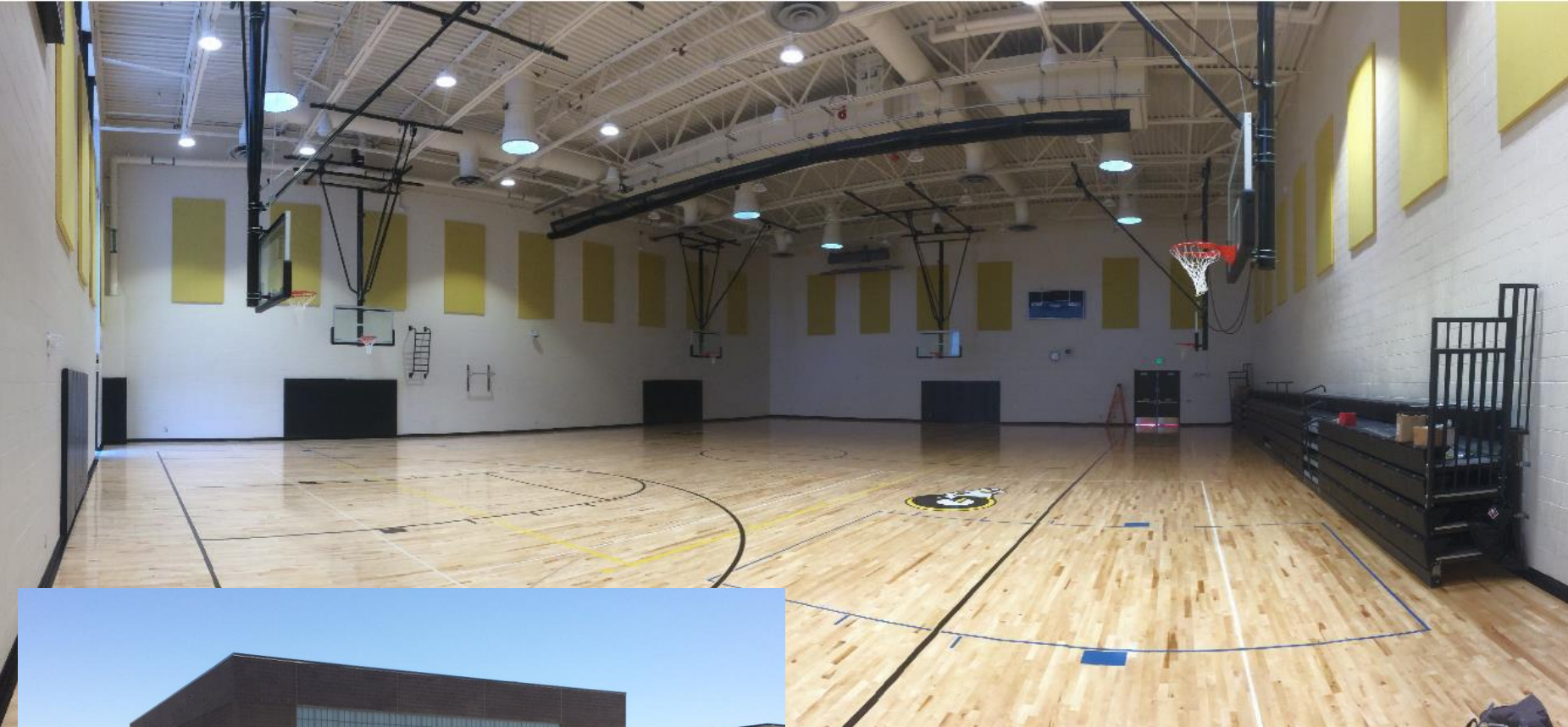
New Buildings & Additions

Kendrick Lakes ES

Larson Incitti – GC Roche



Green Mountain HS – Aux Addition MOA – CMGC GE Johnson



Warren Tech South – New Building

HCM – GC JHL

Warren Tech South
Ribbon Cutting
9/24



Conifer HS – Aux Gym Addition Cannon – CMGC FCI

Conifer HS Ribbon Cutting
was 8/16



Columbine HS – Aux Gym Addition EIDOS – CMGC Swinerton

Columbine Ribbon Cutting
8/20



Columbine HS – Aux Gym Addition EIDOS – CMGC Swinerton

Columbine Ribbon Cutting
8/20



Bell MS – 1 Story, 4 Classroom Addition Eidos – GC Golden Triangle

Bell MS Ribbon Cutting
9/1



Bell MS – 1 Story, 4 Classroom Addition Eidos – GC Golden Triangle

Bell MS Ribbon Cutting
9/1



Wayne Carle – 2 Story – 8 Classroom Addition RB+B – GC Basset

Wayne Carle Ribbon Cutting
8/25



Wayne Carle – 2 Story – 8 Classroom Addition RB+B – GC Basset

Wayne Carle Ribbon Cutting
8/25



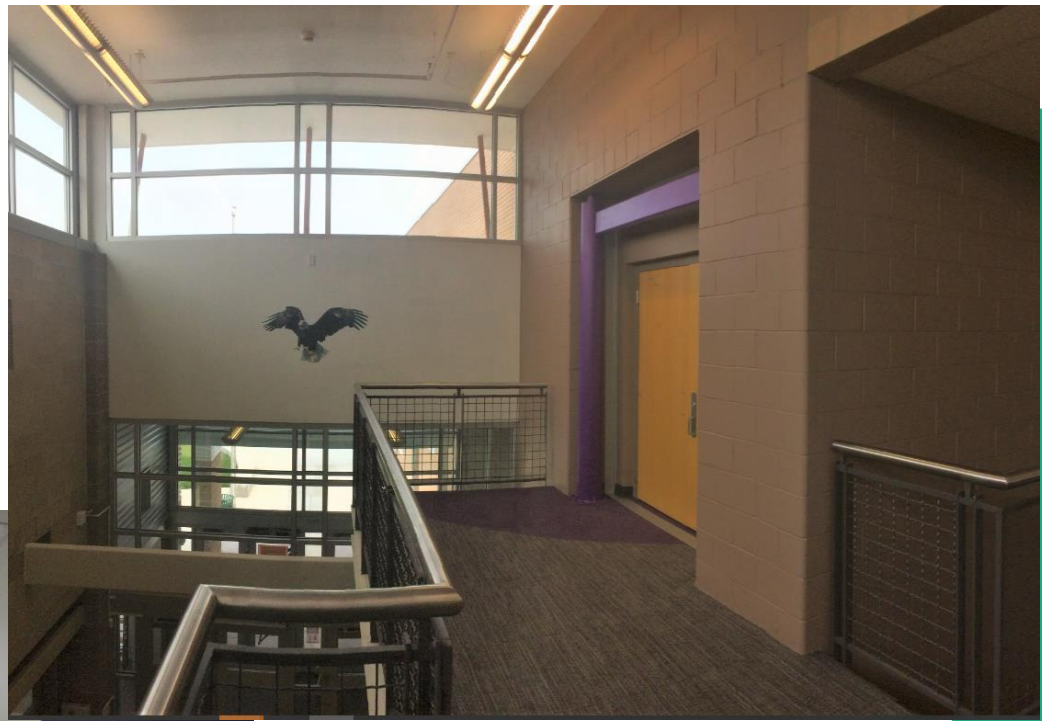
Wayne Carle – 2 Story – 8 Classroom Addition RB+B – GC Basset

Wayne Carle Ribbon Cutting
8/25



Wayne Carle – 2 Story – 8 Classroom Addition RB+B – GC Basset

Wayne Carle Ribbon Cutting
8/25

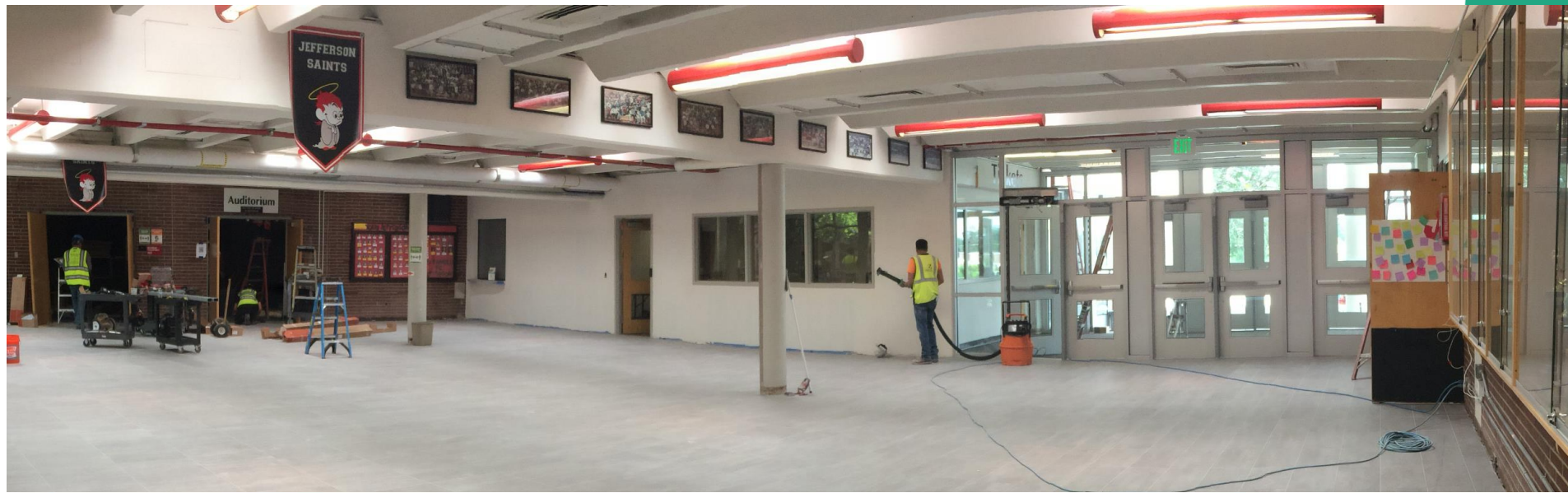


Jefferson HS – Aux Gym Addition MOA – CMGC Haselden



Jefferson HS – Aux Gym Addition

MOA – CMGC Haselden



Manning Opt – 1 Story – 7 Classroom Addition AMD – GC Fransen Pittman



Manning Opt – 1 Story – 7 Classroom Addition AMD – GC Fransen Pittman



Lumberg ES – 4 CR Addition MOA – CMGC Haselden



Lumberg ES – 4 CR Addition MOA – CMGC Haselden



Parmalee ES – 1 Story – 6 Classroom Addition OZ – GC Saunders



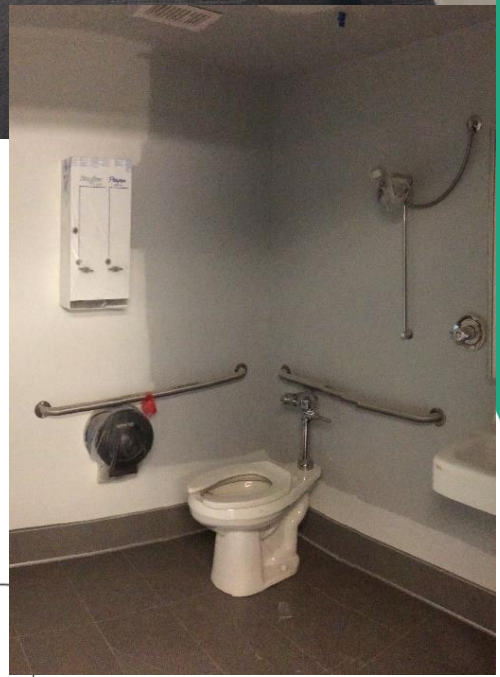
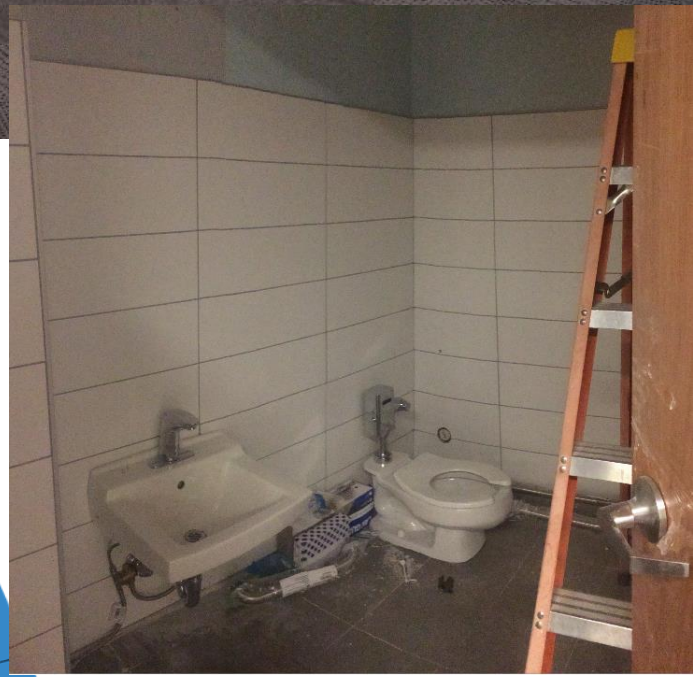
Parmalee ES – 1 Story – 6 Classroom Addition OZ – GC Saunders



Parmalee ES – 1 Story –
6 Classroom Addition
OZ – GC Saunders



Parmalee ES – 1 Story –
6 Classroom Addition
OZ – GC Saunders



Parmalee ES – 1 Story –
6 Classroom Addition
OZ – GC Saunders



Alameda HS – Addition WOLD – CMGC Phipps

Construction Float Report



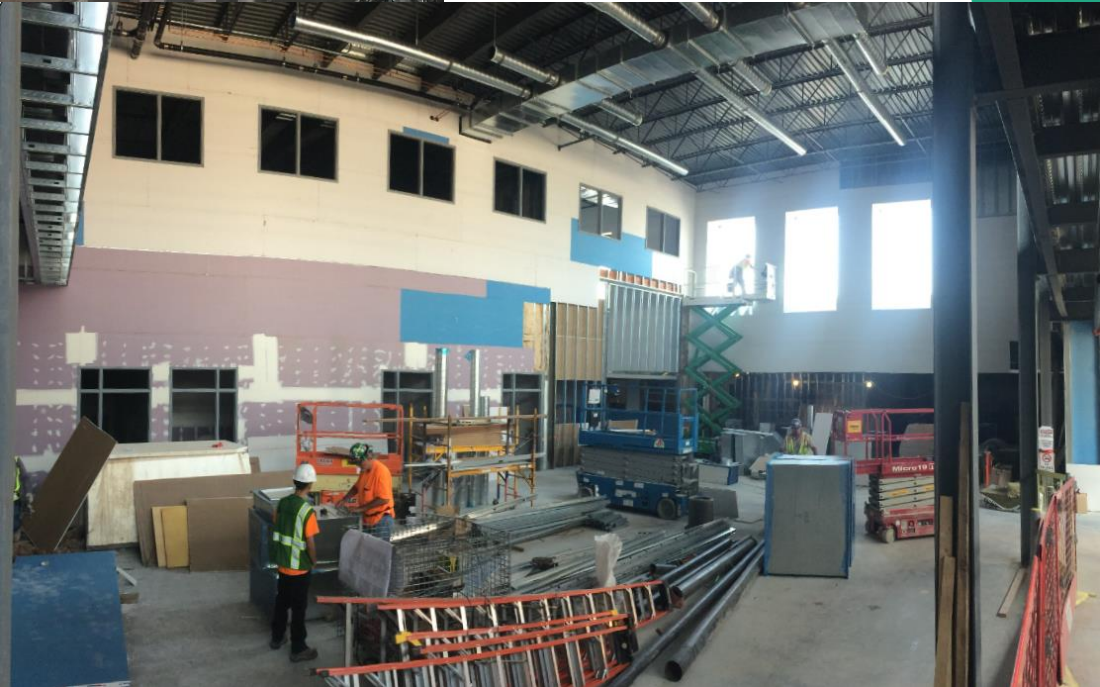
Alameda HS – Addition WOLD – CMGC Phipps

Construction Float Report



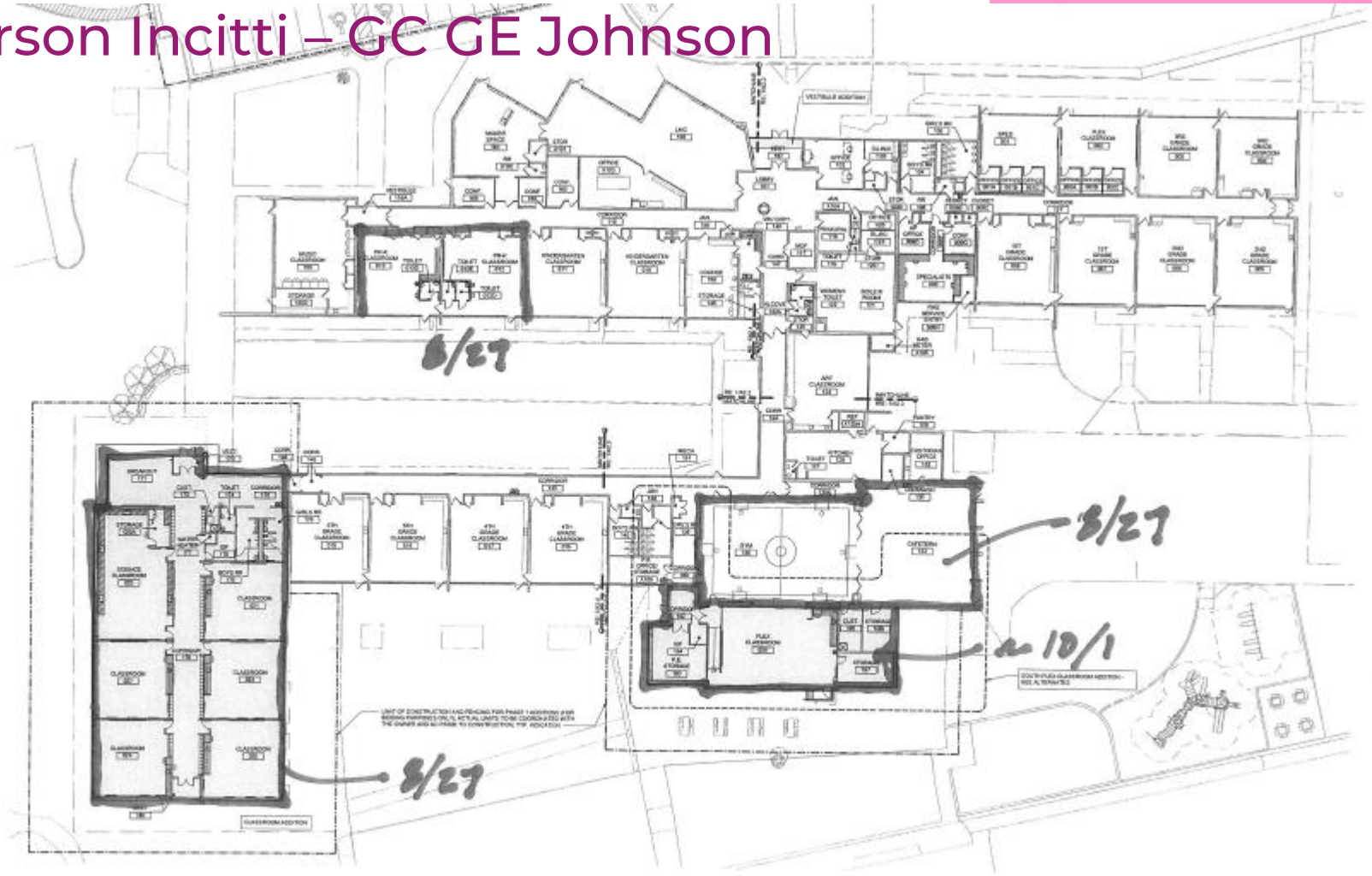
Alameda HS – Addition WOLD – CMGC Phipps

Construction Float Report



Foster ES – 1 Story – 7 Classroom Addition Larson Incitti – GC GE Johnson

Construction Float Report



Foster ES – 1 Story – 7 Classroom Addition Larson Incitti – GC GE Johnson

Construction Float Report



Foster ES – 1 Story –
7 Classroom Addition
Larson Incitti – GC GE Johnson

Construction
Float Report

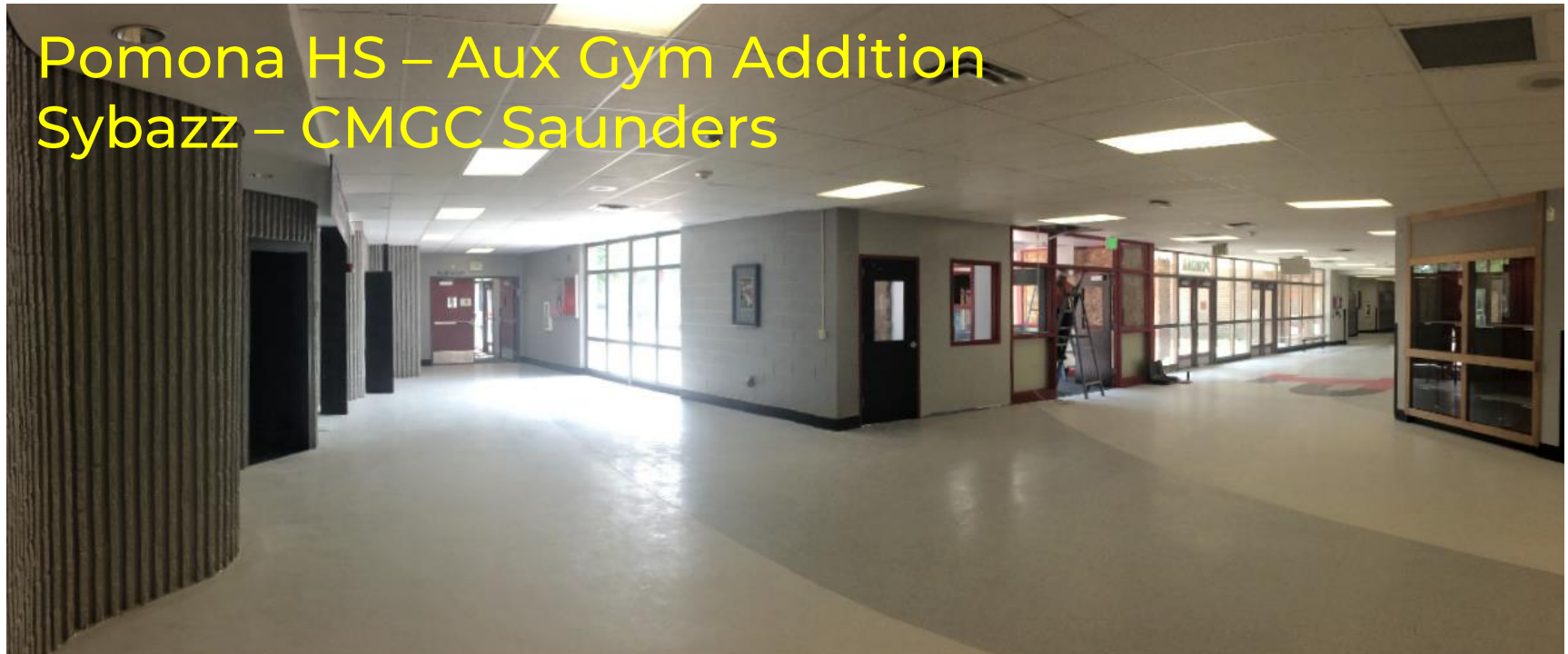


Foster ES – 1 Story –
7 Classroom Addition
Larson Incitti – GC GE Johnson

Construction
Float Report



Pomona HS – Aux Gym Addition Sybazz – CMGC Saunders



Pomona HS – Aux Gym Addition Sybazz – CMGC Saunders



Marshdale ES - Replacement HCM – GC GH Phipps



D'Evelyn – 8 CR Addition HCM – GC Himmelman



2021 Efficiency Future Ready & DW projects

Golden HS – Door Replacement EUA – GC MW Golden

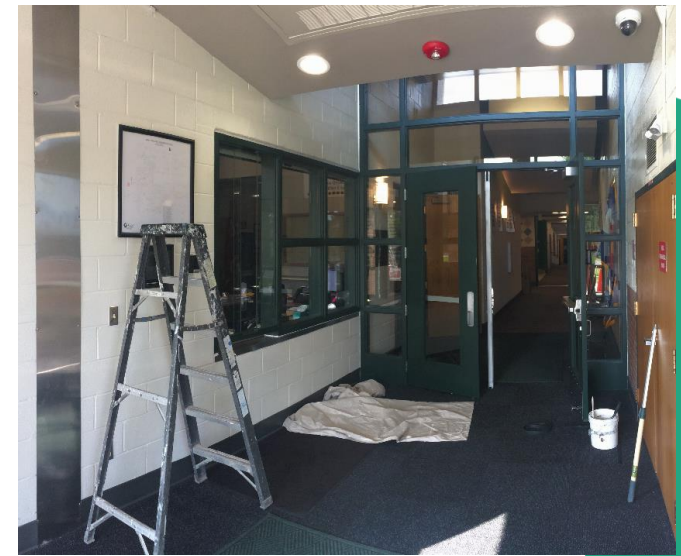


Brady - Efficiency Future Ready Alan Ford – GC Himmelman

Construction Float Report



Maple Grove ES Efficiency Future Ready RTA – GC Golden Triangle



Kyffin ES Efficiency Future Ready Eidos – GC GH Phipps



Kyffin ES
Efficiency Future Ready
Eidos – GC GH Phipps



Fitzmorris ES Efficiency Future Ready Eidos – GC Himmelman



Lawrence ES
Efficiency Future Ready
Eidos – GC Bryan Construction (JCI)



Lawrence ES
Efficiency Future Ready
Eidos – GC Bryan Construction (JCI)



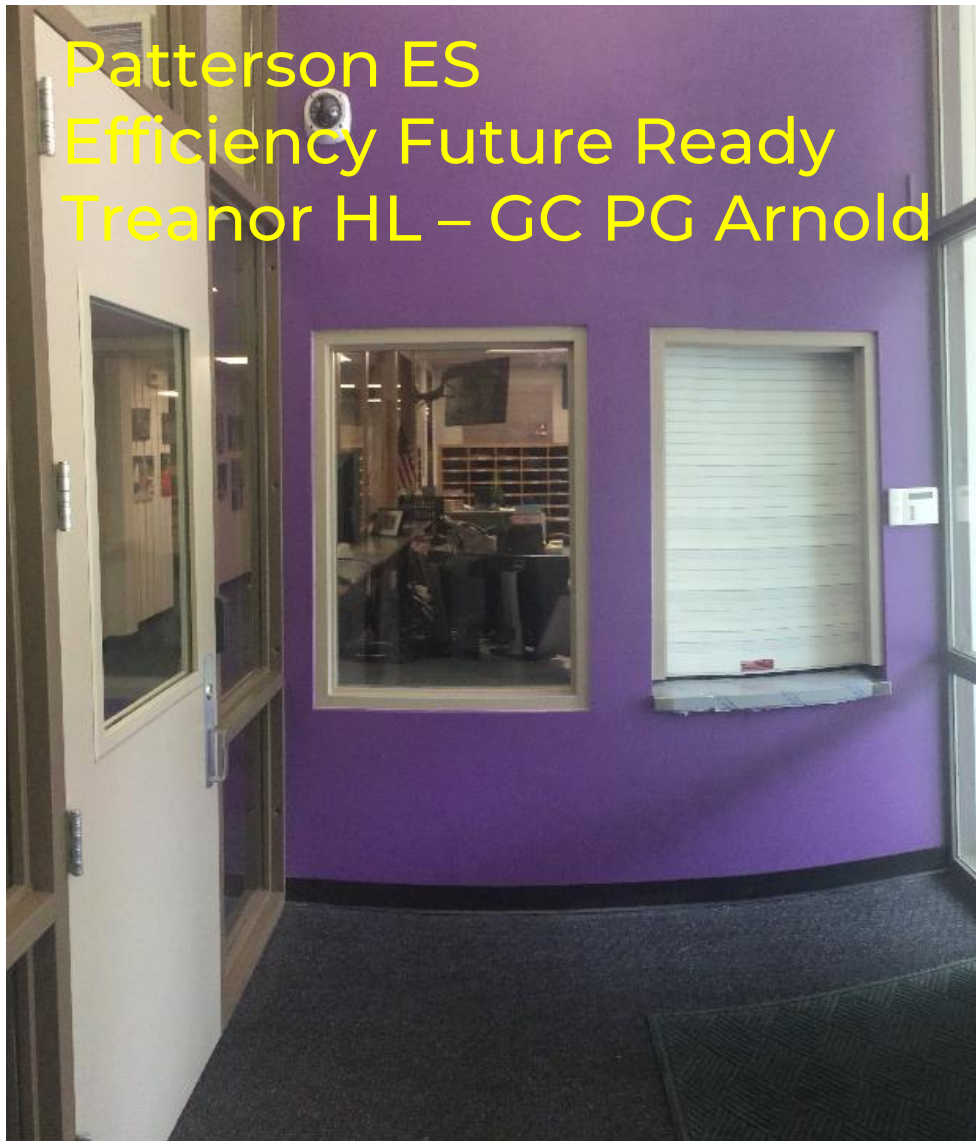
Deane ES Efficiency Future Ready LOA – GC GH Phipps



Lasley ES Efficiency Future Ready Treasor HL – GC PG Arnold



Patterson ES
Efficiency Future Ready
Trenor HL – GC PG Arnold



Patterson Cottages Efficiency Future Ready Treasor HL – GC PG Arnold



Dennison ES Efficiency Future Ready Hollis & Miller- GC MW Golden



Miller Special School Efficiency Future Ready Larson Incitti –GC Himmelman



Miller Special School Efficiency Future Ready Larson Incitti –GC Himmelman



Kullerstrand ES
Efficiency Future Ready
Larson Incitti – GC Himmelman
Alt 2, 3 & 6



Ryan ES

Efficiency Future Ready

RB+B – GC PG Arnold



Ryan ES
Efficiency Future Ready
RB+B – GC PG Arnold



Sheridan Green ES Efficiency Future Ready RB+B – GC Himmelman



Sheridan Green ES

Efficiency Future Ready

RB+B – GC Himmelman



Vanderhoof ES Efficiency Future Ready EUA – GC MW Golden



Vanderhoof ES Efficiency Future Ready EUA – GC MW Golden



Stott ES Efficiency Future Ready EUA – GC Himmelman



Devinny ES
Efficiency Future Ready
DLH – GC Crossland Construction



Devinny ES Efficiency Future Ready DLH – GC Crossland Construction



Carmody MS Alt A1 & A4 Efficiency Future Ready DLH –GC Mark Young



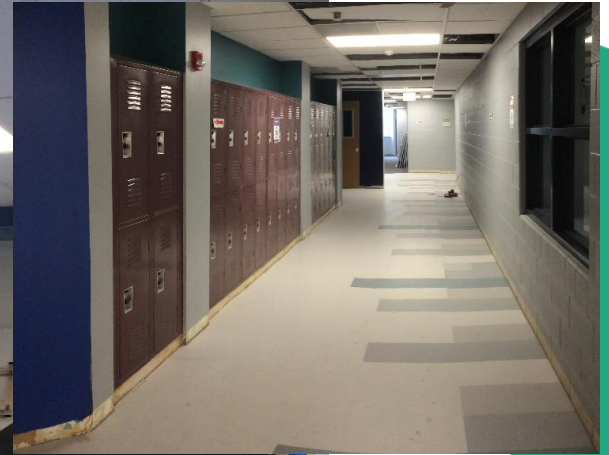
Westridge ES Efficiency Future Ready OZ – GC Single Track



Westridge ES Efficiency Future Ready OZ – GC Single Track



Everitt MS
Efficiency Future Ready
OZ - Bassett



Everitt MS
Efficiency Future Ready
OZ - Bassett



Chatfield HS Efficiency Future Ready Cannon - Haselden



Dakota Ridge HS Efficiency Future Ready Cannon - Haselden



Dakota Ridge HS
Efficiency Future Ready
Cannon - Haselden



DW Security Glass Installation 12 - Schools

Creighton MS Rose Stein 25%

Red Rocks ES Mandalay MS

Weber ES Moore MS

Meiklejohn ES Drake MS

Ken Caryl MS Dutch

Leawood ES Conifer HS



DW Tracks & Turf Fields

HCM – CMGC Saunders



Alameda HS 11/17/21



Wheat Ridge HS 11/3/21

DW Tracks & Turf Fields

HCM – CMGC Saunders



Jefferson 11/24/21



Lumberg COMPLETE



D'Evelyn 11/17/21

DW Roofing
D'Evelyn Opt - SR-DK – Arapahoe -
Fitzmorris ES - SR-DK – Arapahoe –
Lawrence ES-SR-DK-United Materials



DW Roofing

Emory ES - WJE - Powers

Westgate ES - WJE - United Materials

Stevens ES - WJE - Douglass



Emory



Westgate

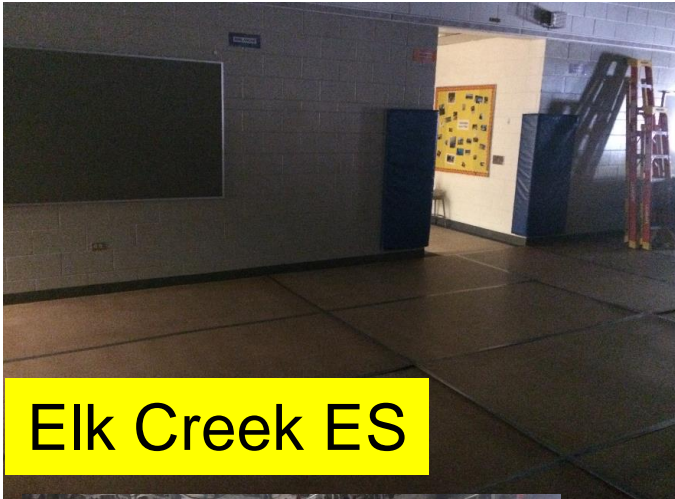


Stevens

DW Mechanical – 5 Schools

Elk Creek ES, Edgewater ES, Peck ES, Secrest ES, Thomson ES

Columbine – US Engineering



Elk Creek ES



Peck



Edgewater



Secrest ES



Thomson

DW LED 2021 – Ackerman – CMGC McKinstry



1. 11/8 Edgewater ES
2. 10/11 Elk Creek ES
3. 11/8 Emory ES
4. 9/6 Kyffin ES
5. 11/8 Red Rocks ES
6. 8/23 Shaffer ES
7. 9/27 Stevens ES
8. 8/23 Stony Creek ES
9. 9/6 Thomson ES
10. 9/27 Warder ES
11. 10/11 West Jefferson ES

DW – Paving
West Jefferson ES
Red Rocks ES
Parmalee ES
JVA – Concrete Express

West Jefferson ES



Parmalee ES



Red Rocks ES

DW – Playgrounds I – Group A Kyffin ES, Red Rocks ES, Peck ES Design Concepts – T2



DW – Playgrounds I – Group B
Warder ES, Secrest ES,
Thomson ES
Design Concepts – T2



Secrest ES



Thomson



Warder ES

DW – Playgrounds – Normandy ES

Lime Green – Arrow J



DW – Playgrounds – Shaffer ES

Lime Green – Arrow J



DW – Playgrounds –
Elk Creek ES
Lime Green – Arrow J



DW – Flooring – Peck Intergroup – PG Arnold



DW – Flooring – Emory Intergroup – PG Arnold



DW – Flooring – Red Rocks Intergroup – PG Arnold



DW – Flooring – Shaffer Intergroup – PG Arnold



DW – Flooring – Shaffer Intergroup – PG Arnold



DW – Flooring – Westgate Intergroup – PG Arnold



2022 Projects

New Buildings & Additions

Powderhorn ES - Addition Hollis & Miller – Himmelman



Construction

Base Bid
\$4,690,000

Budget
\$4,470,623

4.7% Over
Budget
\$219,377

Prospect Valley ES - Replacement MOA – GH Phipps



Construction

Base Bid
\$17,598,000
+ Alt 8
\$66,000

Budget
\$16,959,186

4.2% Over
Budget
\$704,814

Standley Lake HS - Addition Cannon – FCI Constructors



Construction

Base Bid
\$5,293,000
+ Alternates
\$1,134,300

Budget
\$6,456,000

Under
Budget
\$28,700

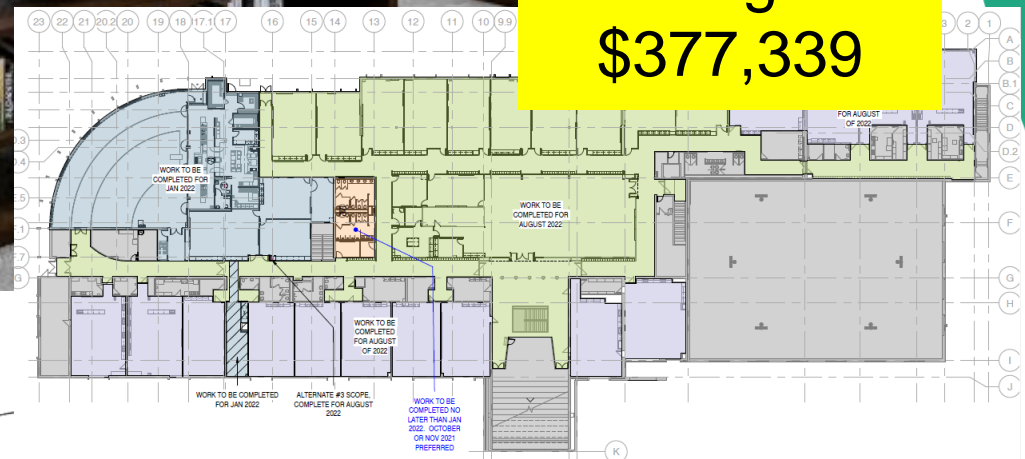
Evergreen MS Efficiency & Future Ready AMD – Haselden

Construction

Base Bid
\$5,169,000
+ Alternates
\$178,900

Budget
\$5,725,239

Under
Budget
\$377,339



Evergreen HS
Efficiency Future Ready
DLR – CMGC JHL

Construction

GMP

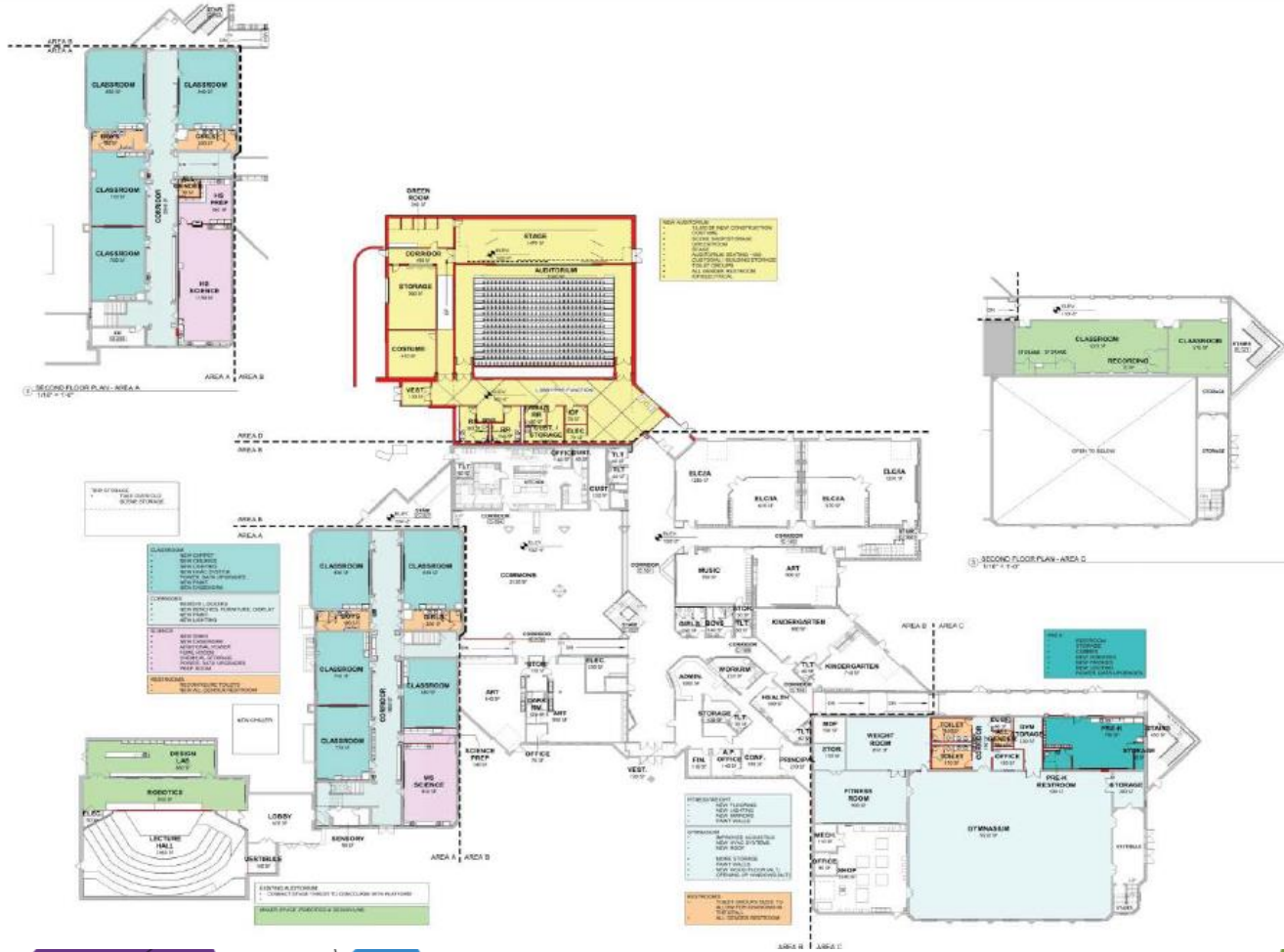
\$8,215,738

On Budget



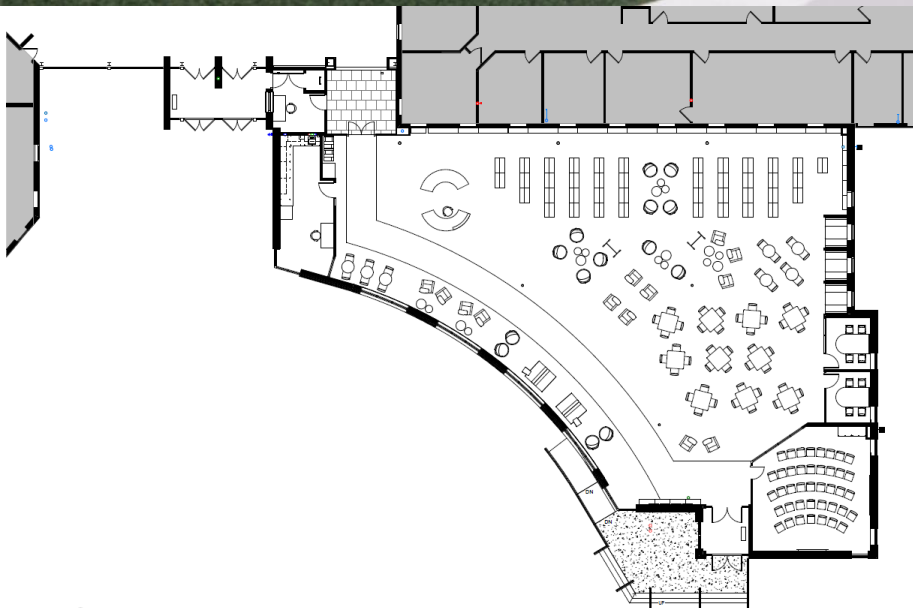
Jeffco Open - Addition HCM - TBD

Bids
8/26/2021



Ralston Valley HS - Addition EUA - TBD

Bids
9/9/2021



2022

44 - Efficiency Future Ready & DW projects

2022 Projects

Location	Articulation	Sched	Type	Description	A/E	Project Manager	Possible Replacement
Mortensen	Chatfield	9/1/21	ES	Efficiency & Future Ready	OZ	Bernadette Kelly	
Shaffer	Chatfield	9/1/21	ES	Efficiency & Future Ready	OZ	Bernadette Kelly	
Stony Creek	Chatfield	9/1/21	ES	Efficiency & Future Ready	OZ	Bernadette Kelly	
DW Playground 2022-I	JDW	9/1/21	DW	4 Schools - Peiffer, Governor's Ranch, Mt. Carbon, Glennon Heights	Design Concepts / Lime Green	Bernadette Kelly	
DW Playground 2022-II	JDW	9/1/21	DW	3 Schools - Campbell, Swanson, Fairmount	Design Concepts / Lime Green	Bernadette Kelly	
DW LED Lighting 2022	JDW	9/1/21	DW	13 Schools - Lawrence, Brady, Bradford North, Bradford South, Ute Meadows, Leawood, Normandy, Rooney Ranch, Creighton MS, Moore MS, Weber ES, Meiklejohn, West Woods	Ackerman	Bill Thaemert	
DW Paving 2022	JDW	9/1/21	DW	5 Schools - Campbell, Peiffer, S Lakewood, Little, Falcon Bluffs	JVA	Bill Thaemert	
Creighton MS	Lakewood	9/1/21	MS	Efficiency & Future Ready	Larson Incitti	Danelle Berzoza	Replaced Oberon
Peck	Arvada	9/1/21	ES	Efficiency & Future Ready	Larson Incitti	Danelle Berzoza	
Secrest	Arvada	9/1/21	ES	Efficiency & Future Ready	Larson Incitti	Danelle Berzoza	
DW Elevator Upgrades 2022	JDW	9/1/21	DW	Elevator Upgrades 2022	Kone	David Curnow	
DW Modular Bldg Removal 2022	JDW	9/1/21	DW	Modular Bldg Removal 2022	In House	David Curnow	
Long View HS	OPT	9/1/21	ES	Efficiency & Future Ready	RTA	Doug Cooper	
Shelton	Golden	9/1/21	ES	Efficiency & Future Ready	RTA	Doug Cooper	
Bear Creek High	Bear Creek	9/1/21	HS	Efficiency & Future Ready	MOA	Ed Huszcza	Replaced Edgewater
Blue Heron	Dakota Ridge	9/1/21	ES	Efficiency & Future Ready	MOA	Ed Huszcza	
Colorow	Dakota Ridge	9/1/21	es	Efficiency & Future Ready	MOA	Ed Huszcza	
Lakewood High	Lakewood	9/1/21	HS	Efficiency & Future Ready	HCM	Hilary Porter	Replaced Molholm
Mt Evans	OELS	9/1/21	OELS	Efficiency & Future Ready	HCM	Hilary Porter	
Windy Peak	OELS	9/1/21	OELS	Efficiency & Future Ready	HCM	Hilary Porter	
DW Mechanical 2022	JDW	9/1/21	DW	Campbell, Fairmount, Falcon bluffs MS, Little, Van Arsdale	Columbine Engineering	Kimber Preece	
North Arvada MS	Arvada	9/1/21	MS	Efficiency & Future Ready	Eidos	Maggie Anderson	
Slater Elementary	Lakewood	9/1/21	ES	Efficiency & Future Ready	Eidos	Maggie Anderson	
Wheat Ridge HS	Wheat Ridge	9/1/21	HS	Efficiency & Future Ready + Turf Replacement	Eidos	Maggie Anderson	
Wilmore Davis	Wheat Ridge	9/1/21	ES	Efficiency & Future Ready	Eidos	Maggie Anderson	

2022 Projects

Location	Articulation	Sched	Type	Description	A/E	Project Manager	Possible Replacement
Emory	Alameda	9/1/21	ES	Efficiency & Future Ready	Treanor HL	Pam Grover	
Red Rocks	Bear Creek	9/1/21	ES	Efficiency & Future Ready	Treanor HL	Pam Grover	
Westgate	Bear Creek	9/1/21	ES	Efficiency & Future Ready	Treanor HL	Pam Grover	
DW Flooring 2022-II	JDW	9/1/21	DW	7 Schools - Swanson, Glennon Heights, S Lakewood, Little, Parr, Van Arsdale, Pennington	Treanor HL	Pam Grover	
Awest HS	Awest	9/1/21	HS	Efficiency & Future Ready	LOA	Sam Miller	
Mandalay	Standley Lake	9/1/21	ES	Efficiency & Future Ready	RB+B	Sam Miller	
Warder	Pomona	9/1/21	ES	Efficiency & Future Ready	RB+B	Sam Miller	
Warren OTC North	Awest	9/1/21	OTC	Efficiency & Future Ready	LOA	Sam Miller	
Bergan Valley	Evergreen	9/1/21	ES	Efficiency & Future Ready	H&M / BVH / EUA	Ted Hagan	
Elk Creek	Conifer	9/1/21	ES	Efficiency & Future Ready	H&M / BVH / EUA	Ted Hagan	
Golden High	Golden	9/1/21	HS	Efficiency & Future Ready	H&M / BVH / EUA	Ted Hagan	Replaced Bergan Meadow
Mitchell	Golden	9/1/21	ES	Efficiency & Future Ready	H&M / BVH / EUA	Ted Hagan	
West Jeff	Conifer	9/1/21	ES	Efficiency & Future Ready	H&M / BVH / EUA	Ted Hagan	
Green Mountain	Green Mtn	9/1/21	ES	Efficiency & Future Ready	Sybazz	Troy Antill	
Stevens WR 5-8	Wheat Ridge	9/1/21	ES	Efficiency & Future Ready	Sybazz	Troy Antill	
Thomson	Arvada	9/1/21	ES	Efficiency & Future Ready	Sybazz/ Intergroup	Troy Antill	
DW Flooring 2022-I	JDW	9/1/21	DW	7 Schools - Dear Creek MS, Falcon Bluffs MS, Summit Ridge MS, Peiffer, Governor's Ranch, Mt Carbon, Rooney Ranch	Sybazz	Troy Antill	
DW Roofing 2022	JDW	9/1/21	DW	5 schools - Summit Ridge MS, Campbell, Fairmount, S Lakewood, Little, Parr, Pennington	Cave, WJE, SRDK, Roof Tech	Troy Antill	
DW Security Glass 2022	JDW	9/1/21	DW	11 schools - Swanson, Awest, Campbell, Fairmount, BCK8, Summit Ridge MS, Glennon Heights, S Lakewood, Little, Parr, Pennington	In House	Troy Antill	

Next Meeting 9/16/21